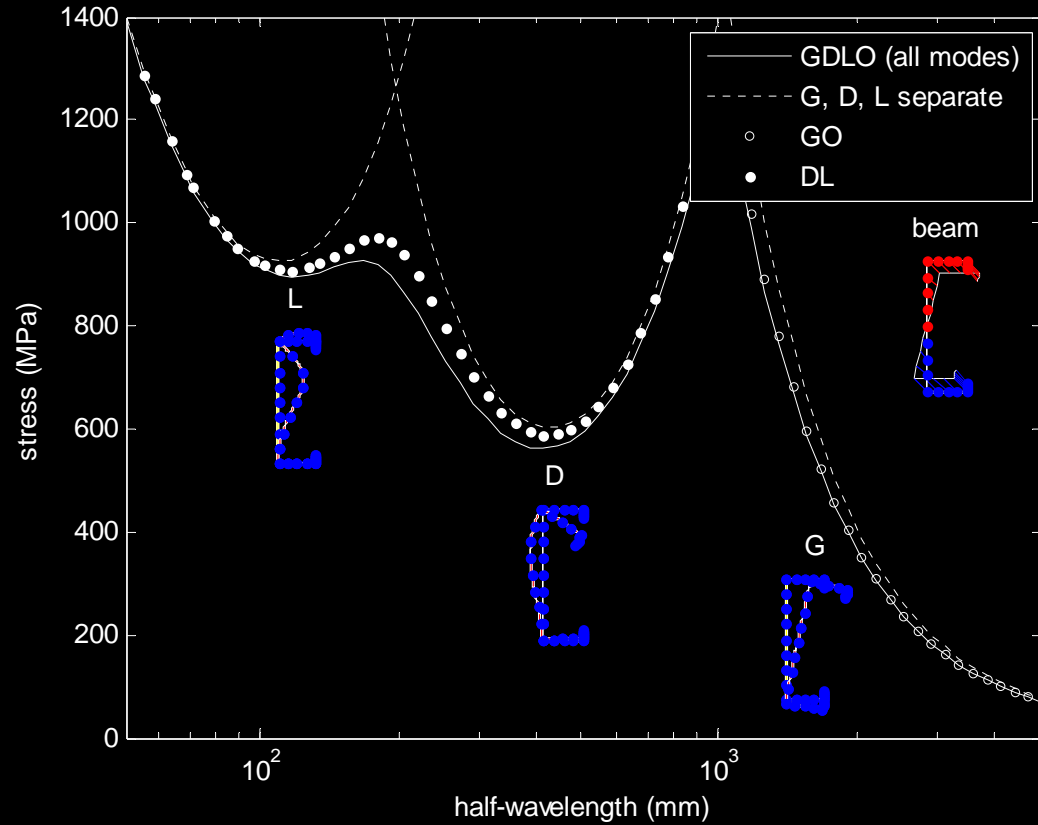


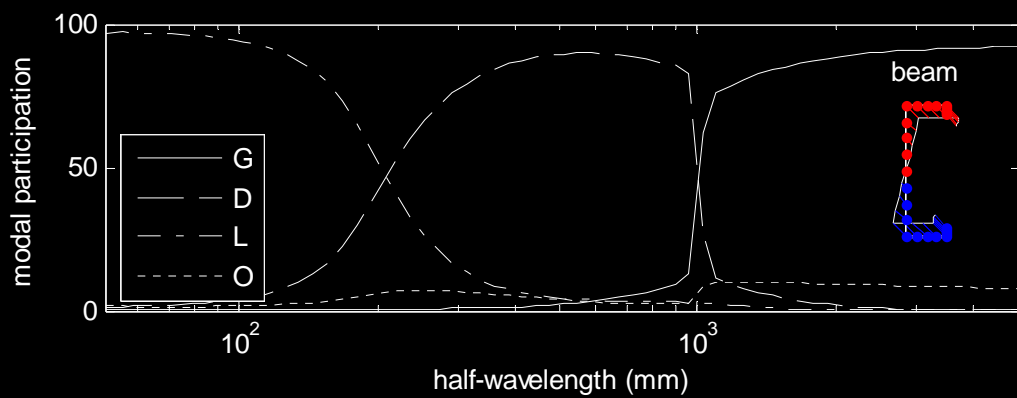
NSF Project
CAREER: STRUCTURAL STABILITY AND
THIN-WALLED STRUCTURES

- cFSM (constrained finite strip method)
working with Adany, Silvestre, Camotim
- Inelastic bending capacity
working with Shifferaw (PhD student)
- Beam-columns and walls: development of
experimental testing apparatus
working with Sangree (Postdoc) and undergraduates

cFSM

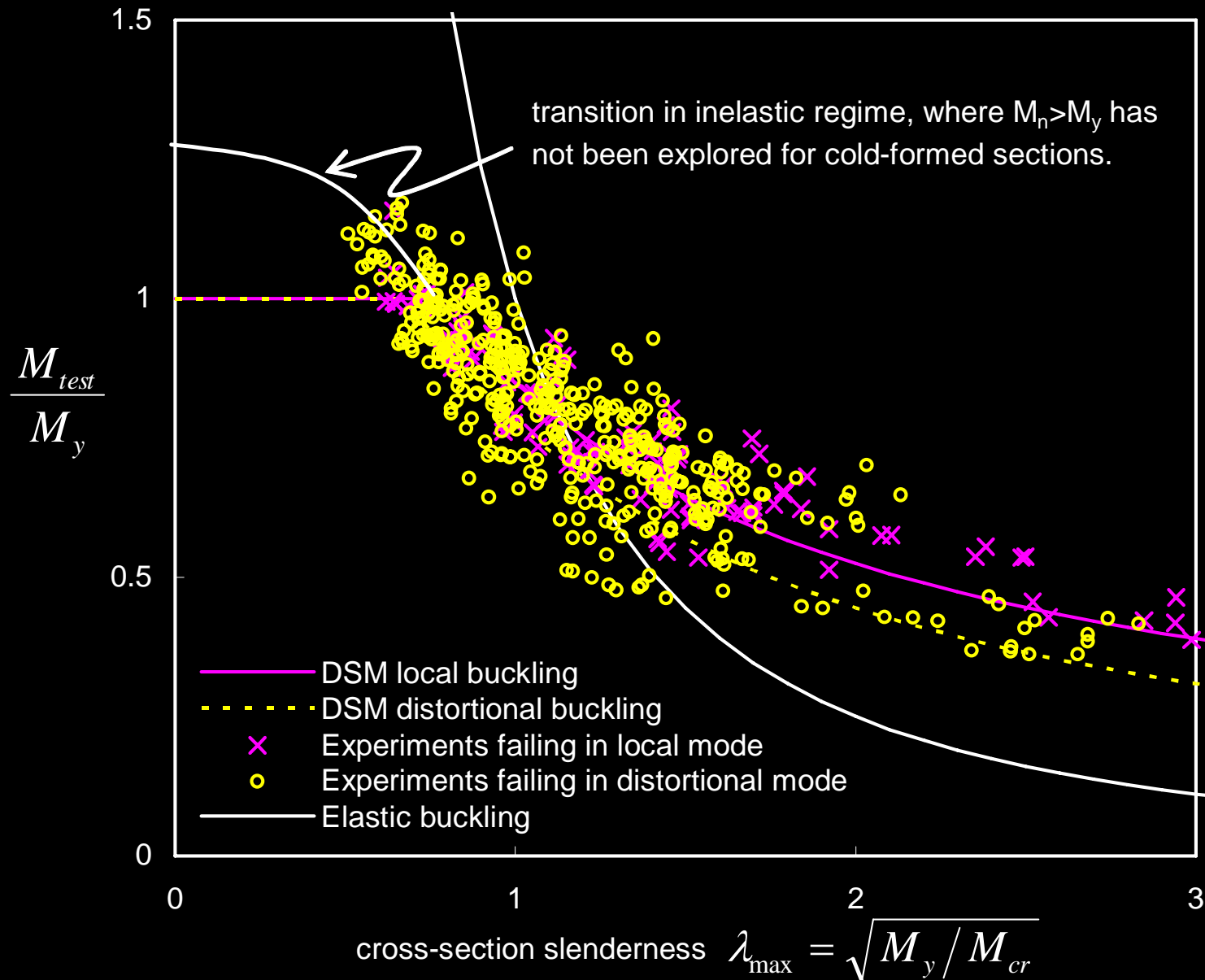


modal
decomposition

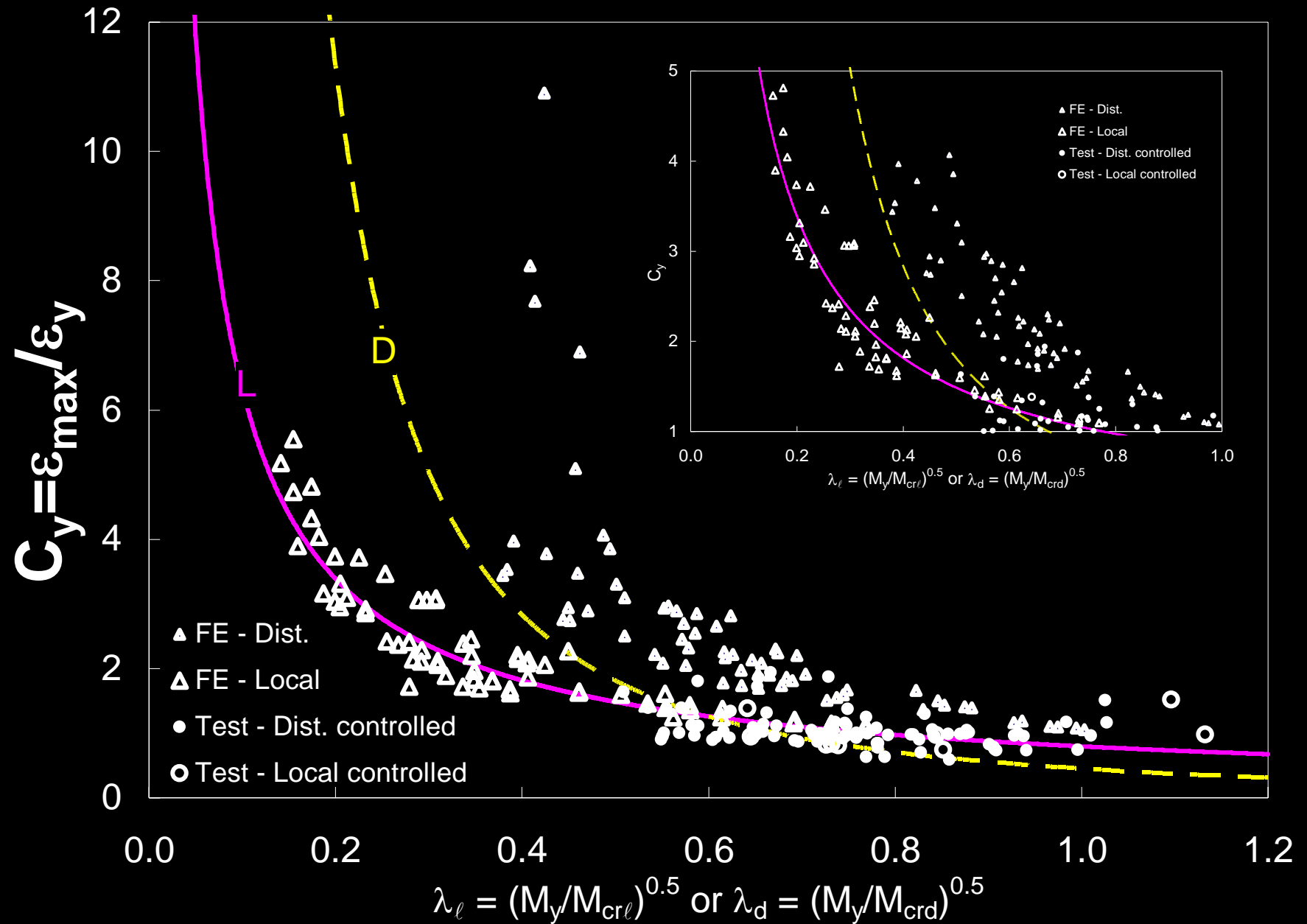


modal
identification

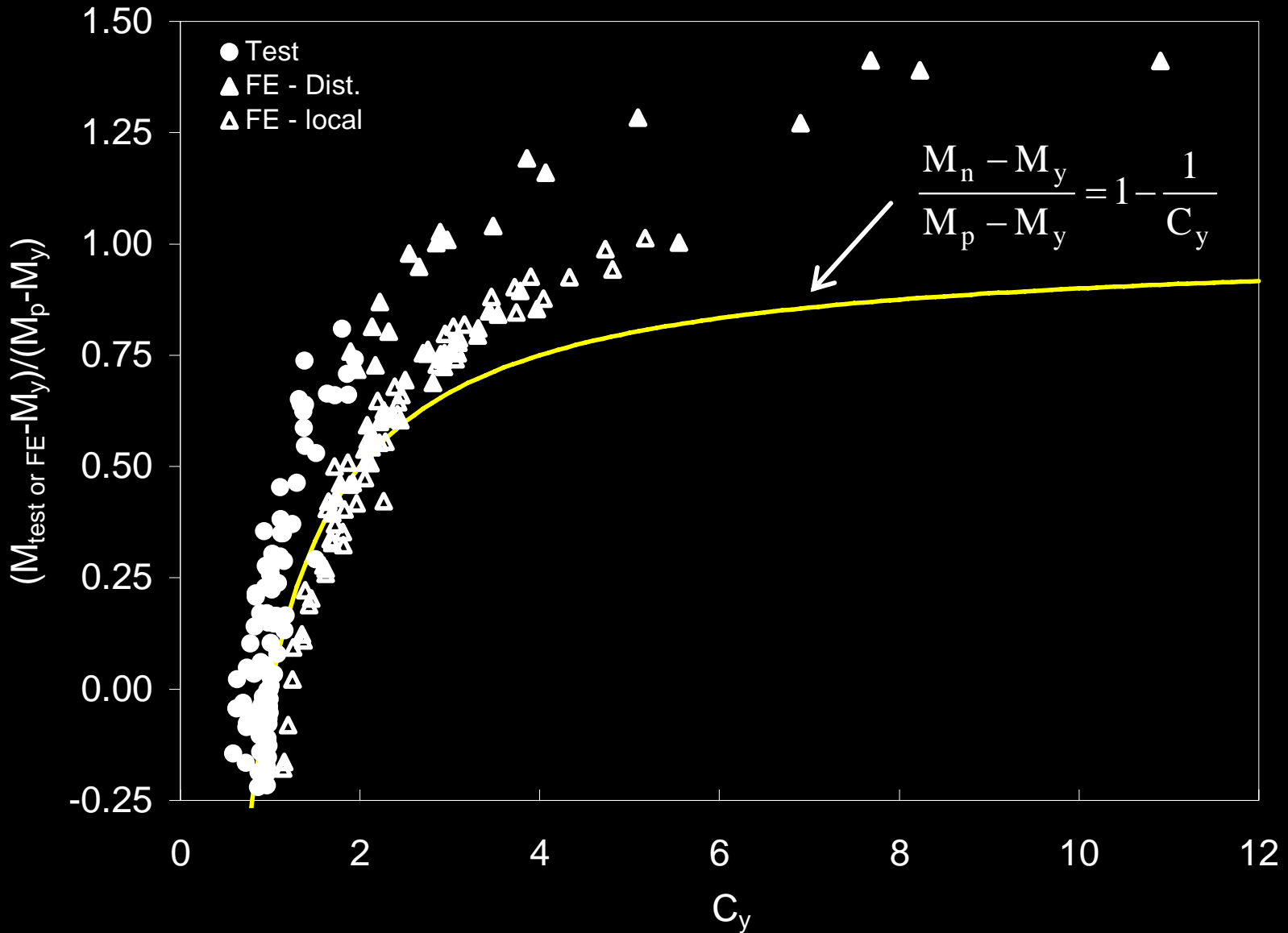
inelastic bending



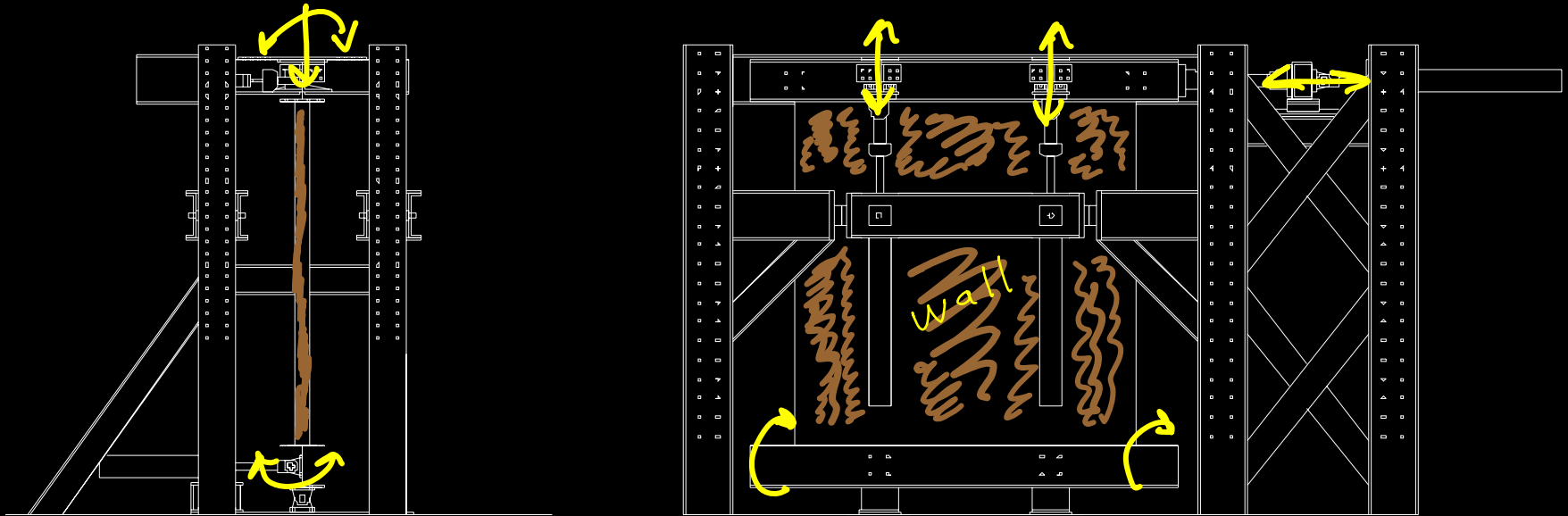
slenderness to strain



strain to strength



beam-columns and walls - testing



- design completed
- steel out to bid now
- funding \$ through NSF, JHU