

GENERAL NOTES

All structural steel shall be ASTM A992 Grade 50.

All bolts shall be ASTM A490.

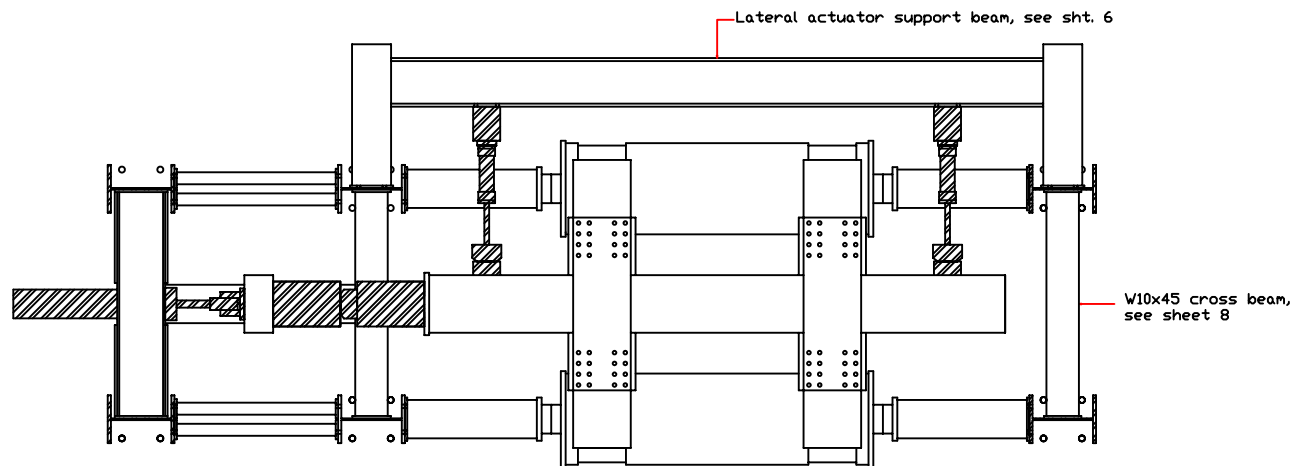
All bolt holes are 13/16" diameter, unless otherwise noted.

Minimum weld strength shall be 70 ksi.

 Supplied by others

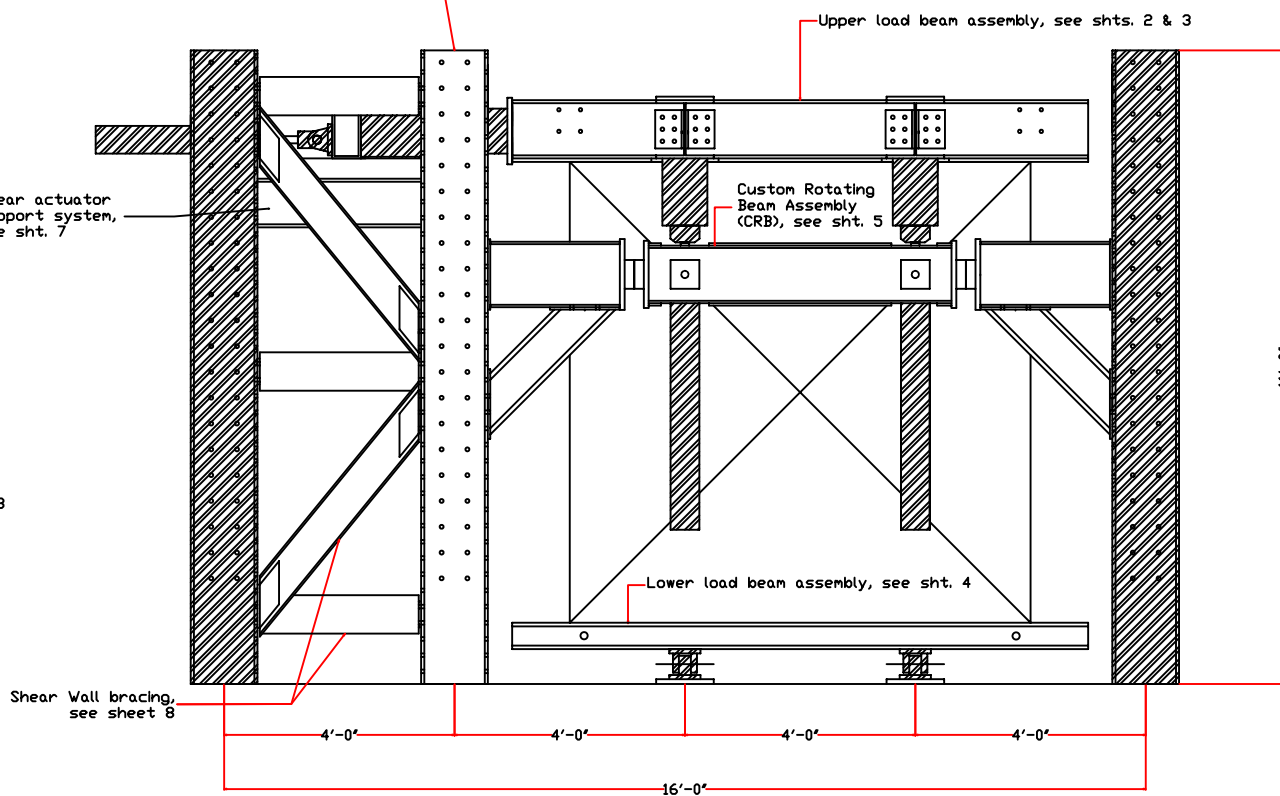
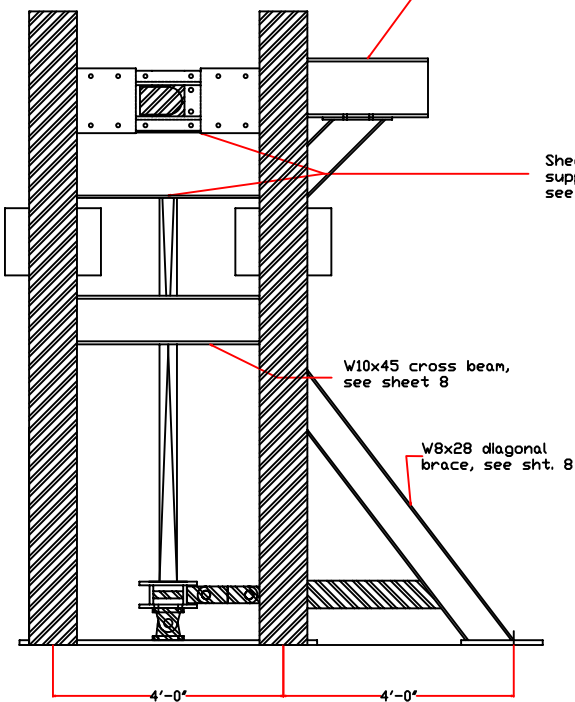
SHEET INDEX

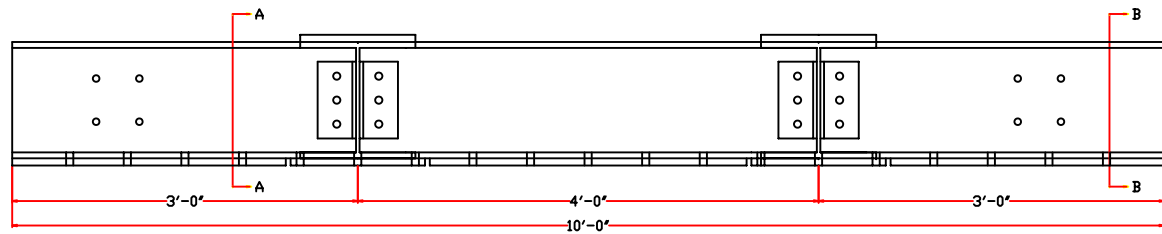
1. General Notes, Plan and Elevation Views of complete structure
2. Upper Load Beam Assembly
3. Upper Load Beam Details
4. Lower Load Beam
5. Custom Rotating Beam Assembly
6. Lateral Actuator Support System
7. Shear Actuator Support System
8. Columns and Lateral Braces



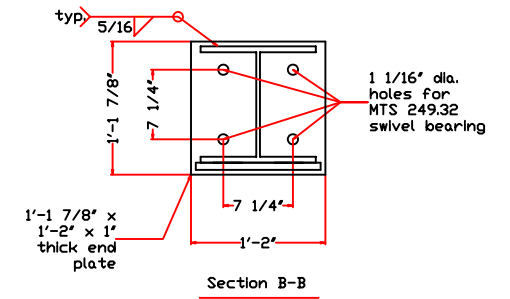
W14x61 Interior Columns, see sht. 8

Lateral actuator support beam, see sht. 6

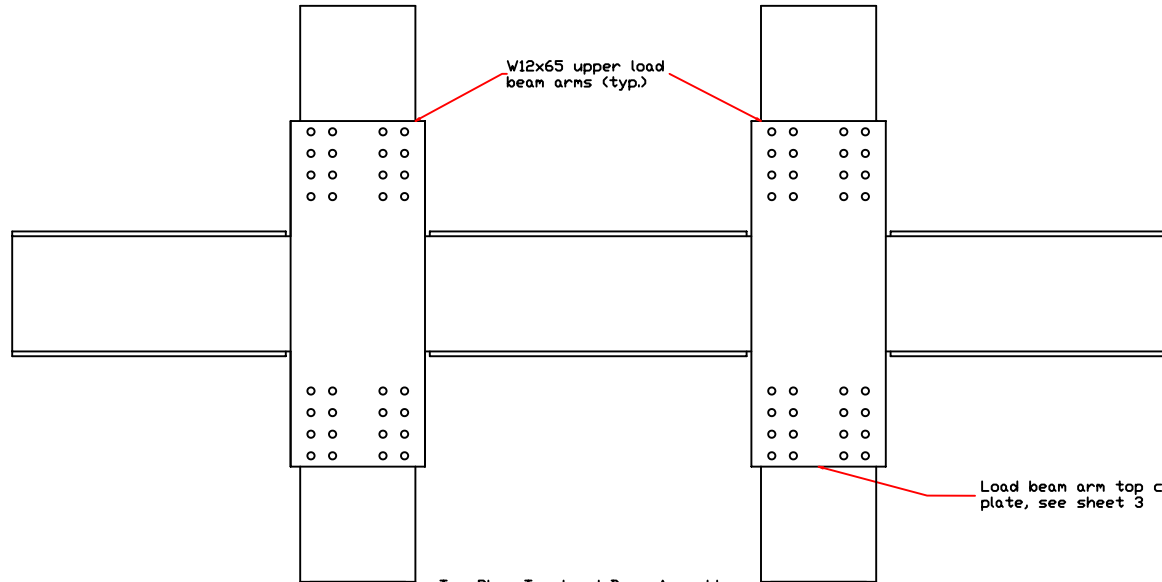




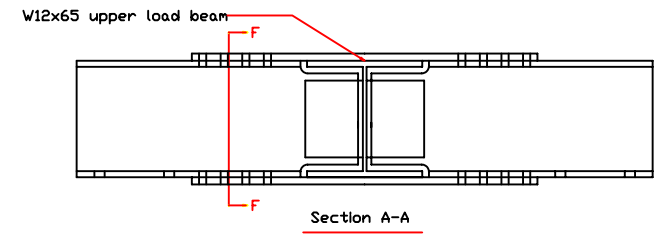
Elevation: Top Load Beam Assembly



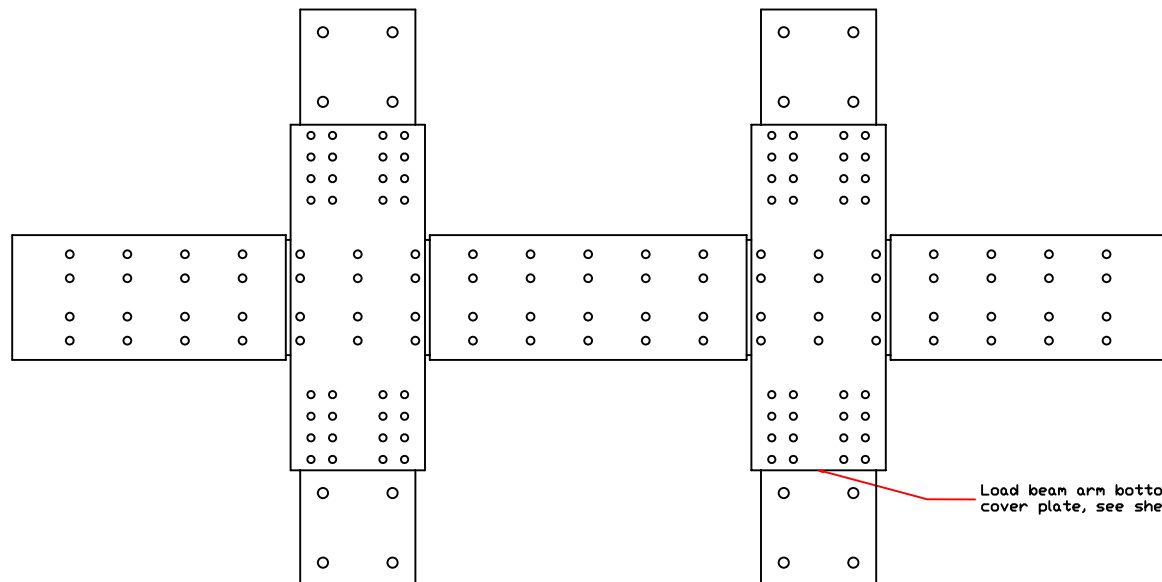
Section B-B



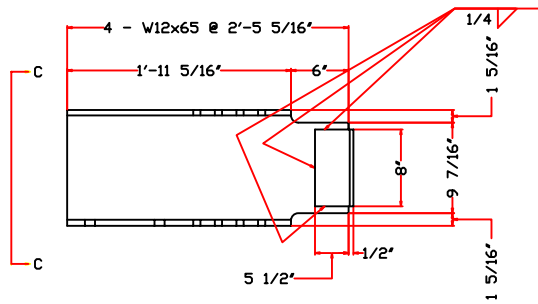
Top Plan: Top Load Beam Assembly



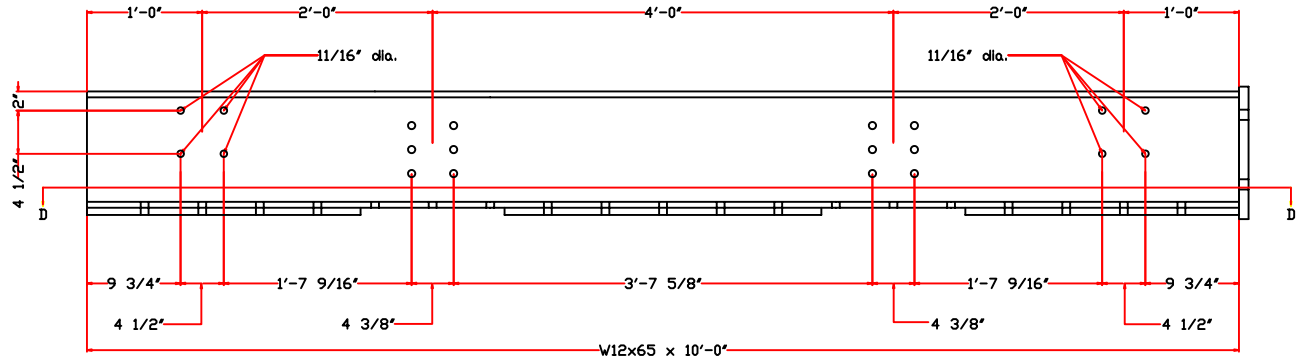
Section A-A



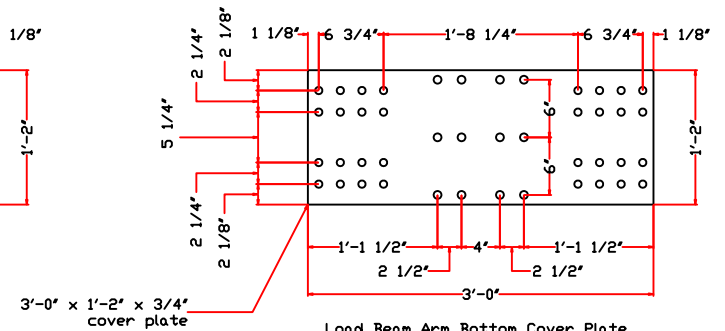
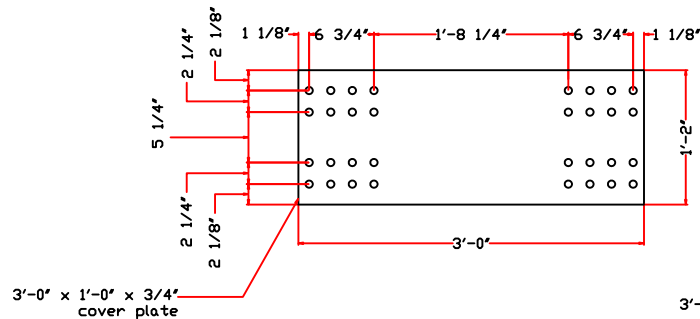
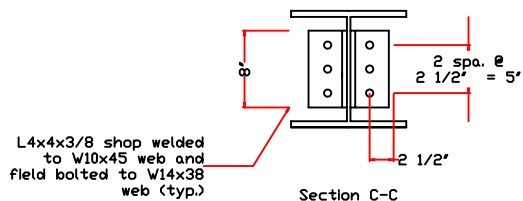
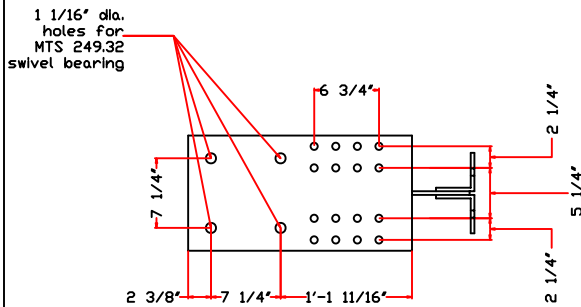
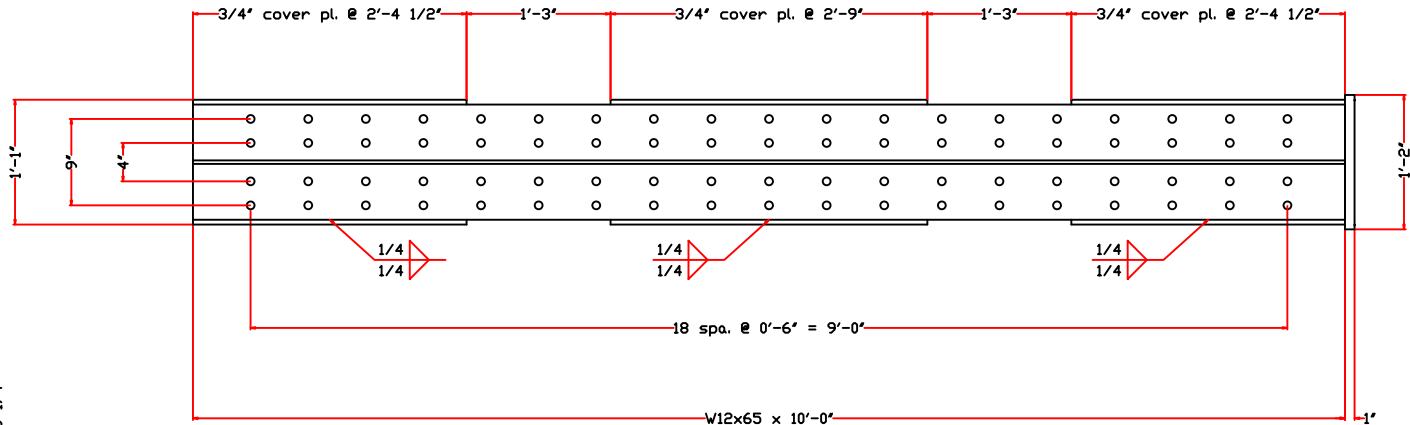
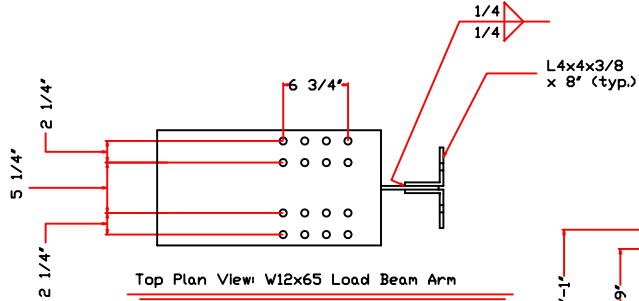
Bottom Plan: Top Load Beam Assembly

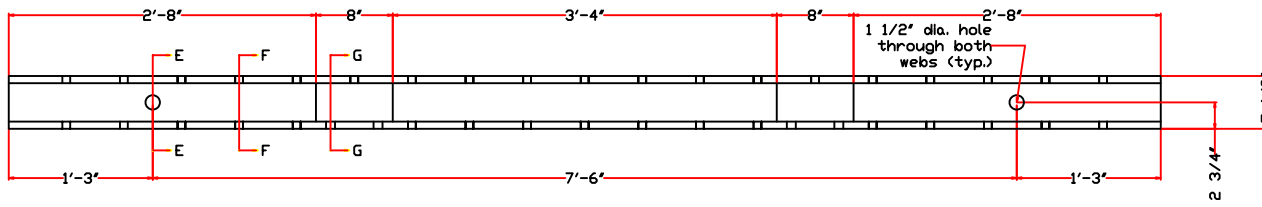


Elevation: W12x65 Load Beam Arm

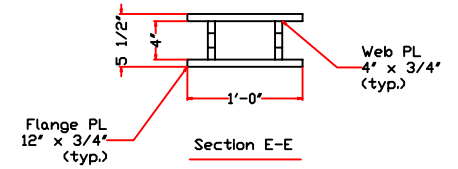


Elevation: W12x65 Load Beam

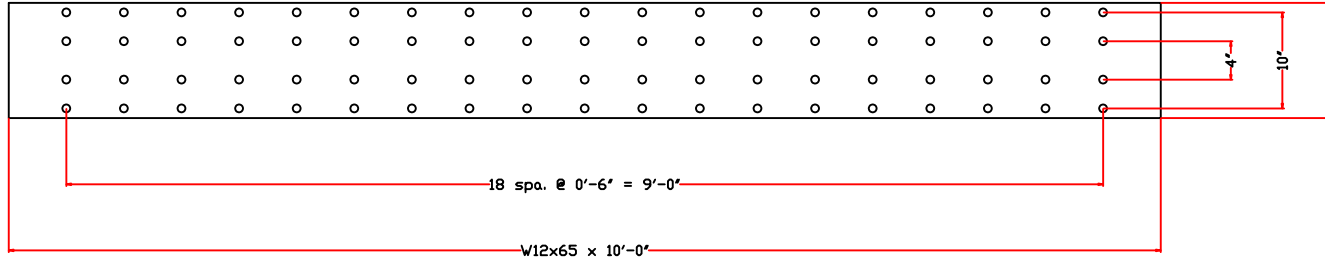




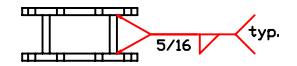
Elevation: Bottom Load Beam



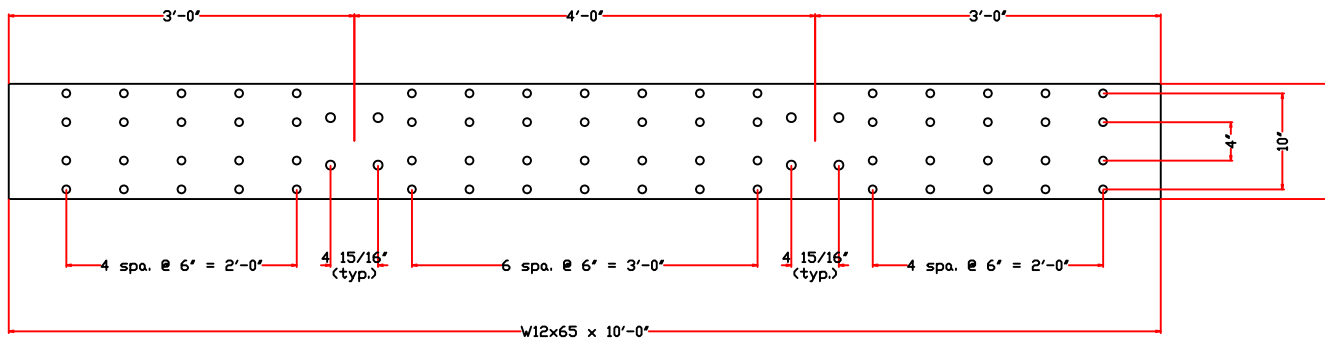
Section E-E



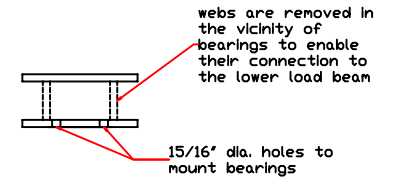
Plan: Top Flange View



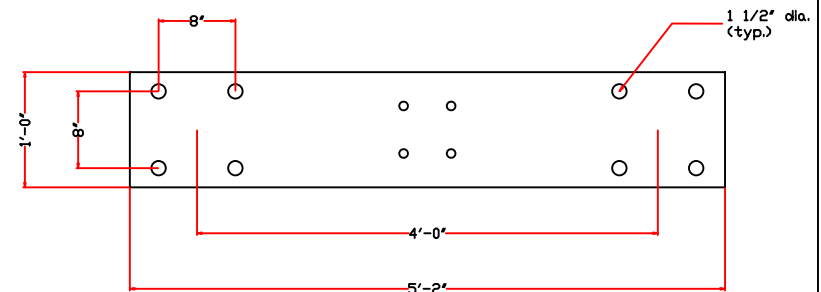
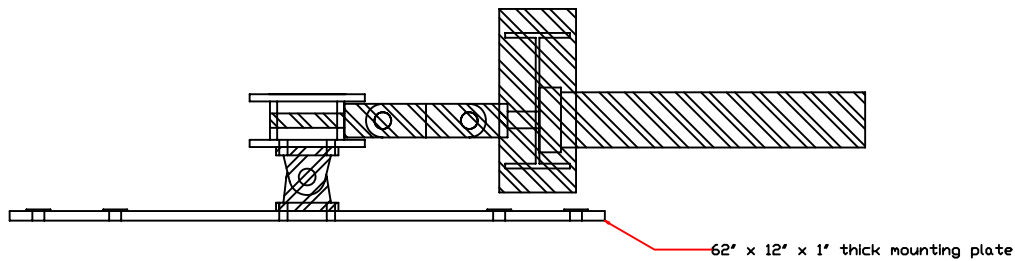
Section F-F



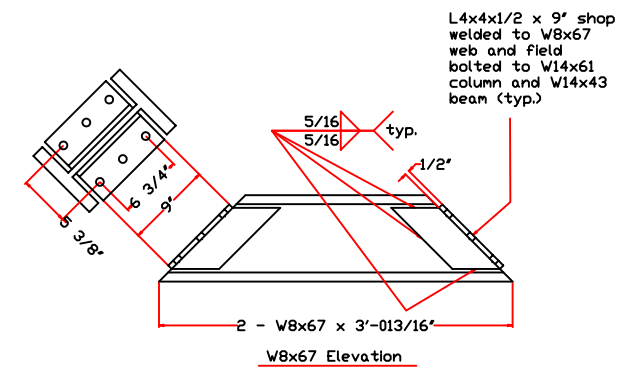
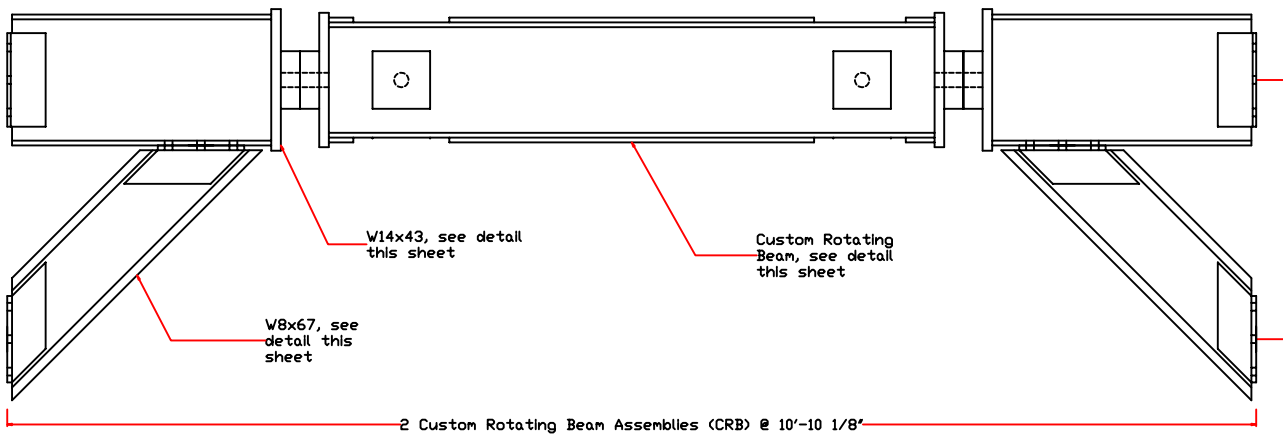
Plan: Bottom Flange View



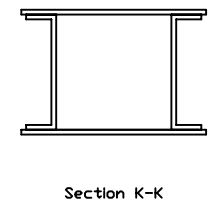
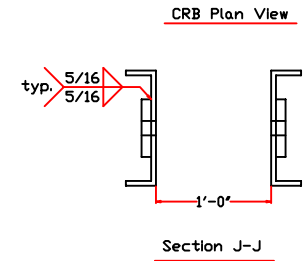
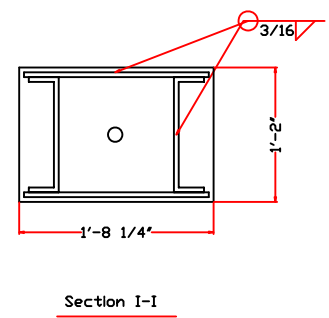
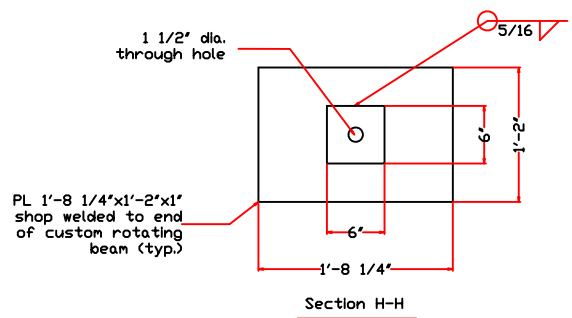
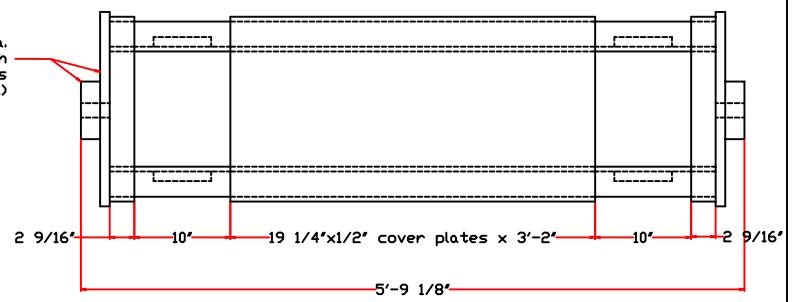
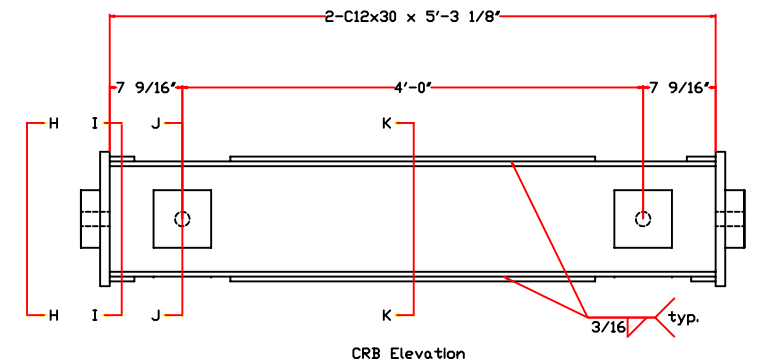
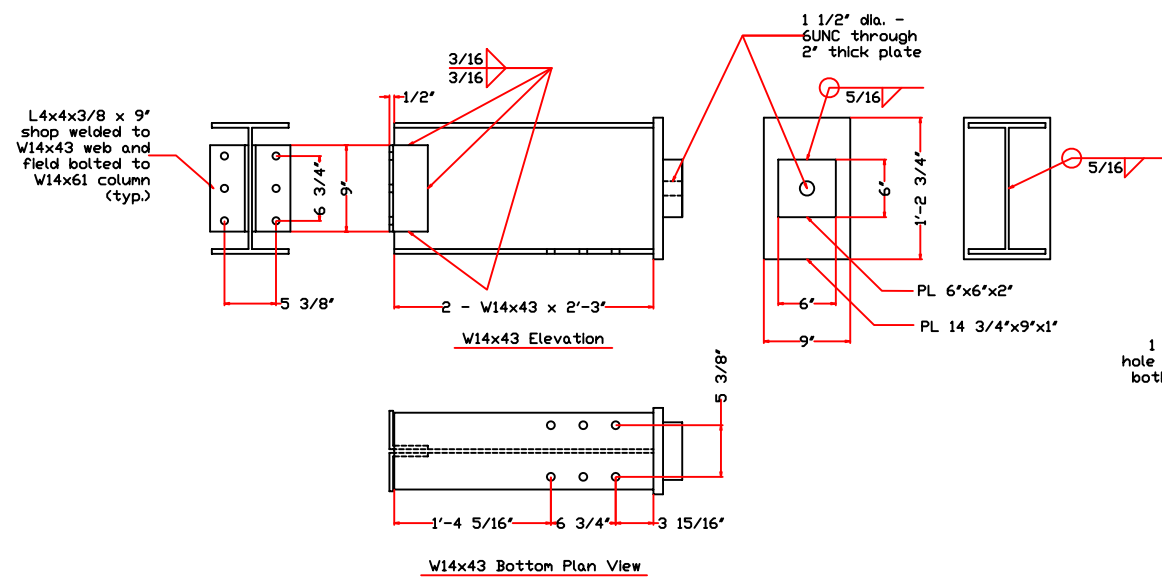
Section G-G

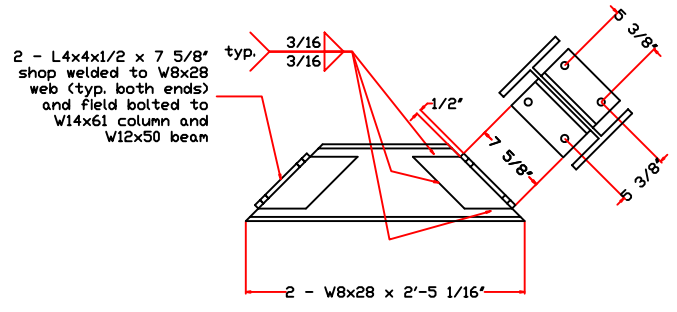
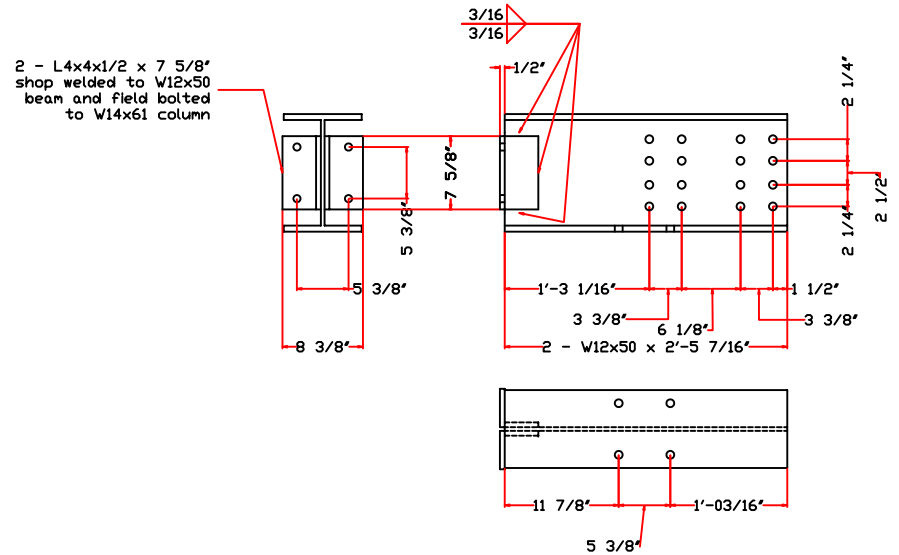
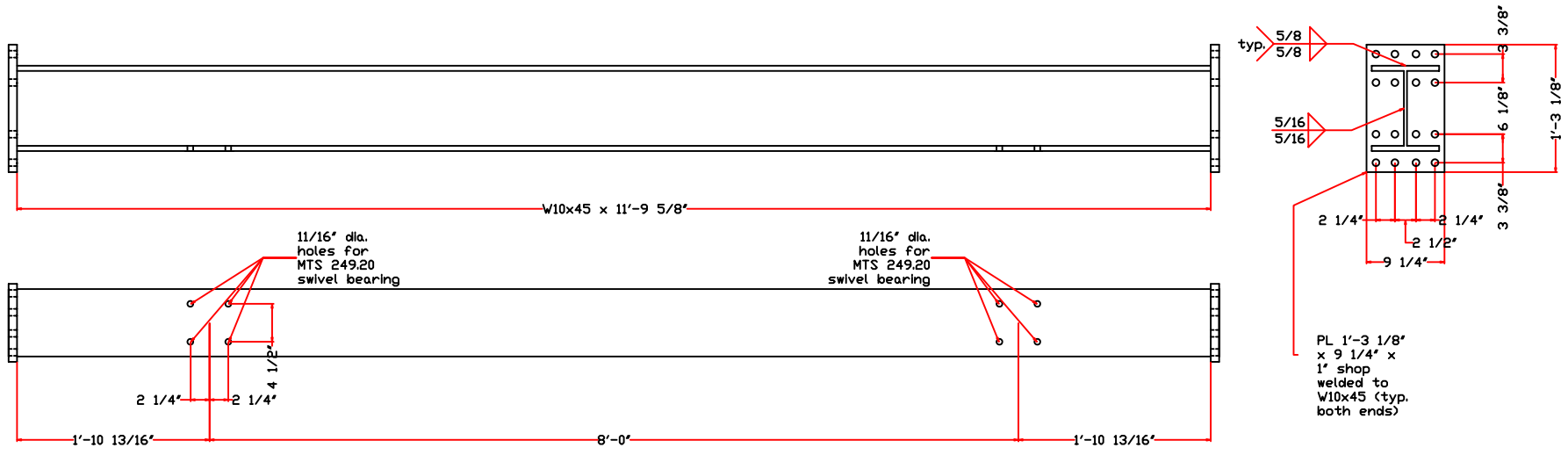
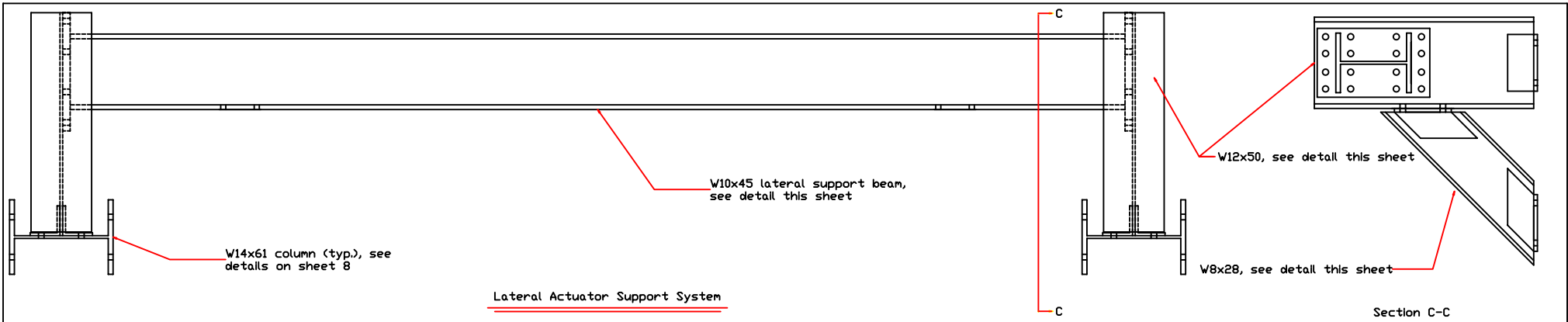


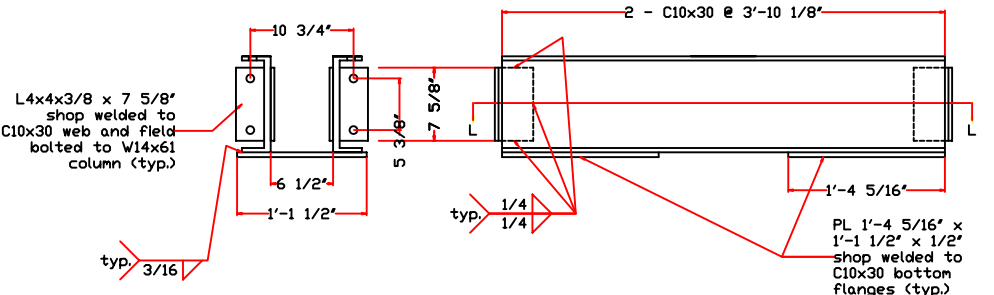
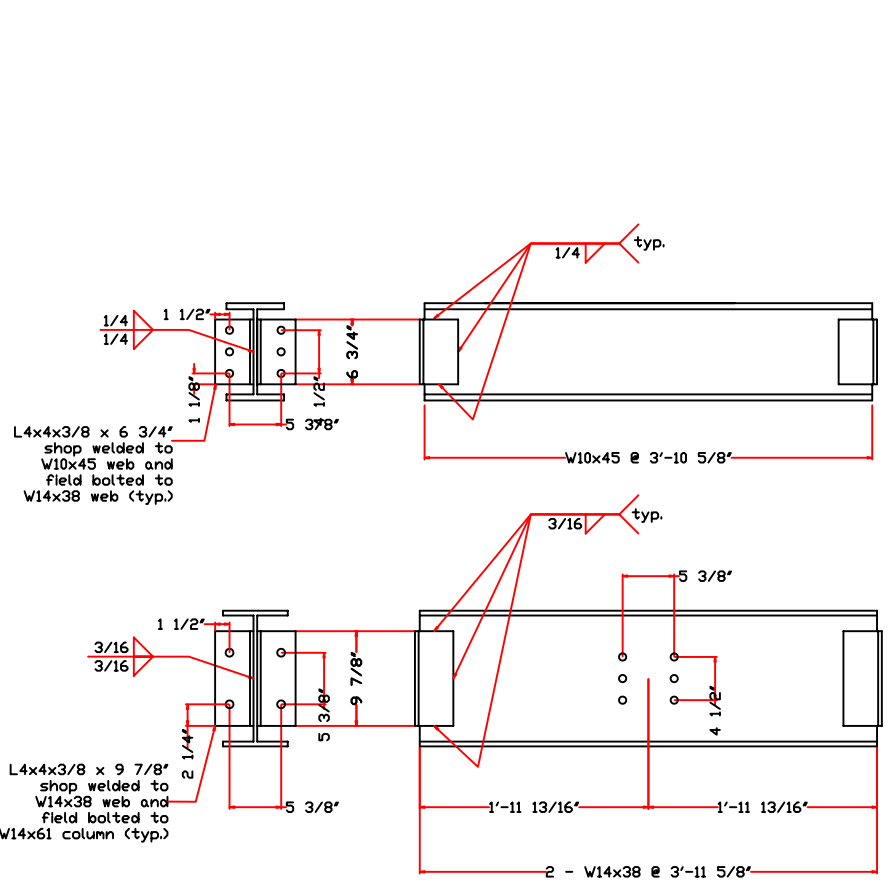
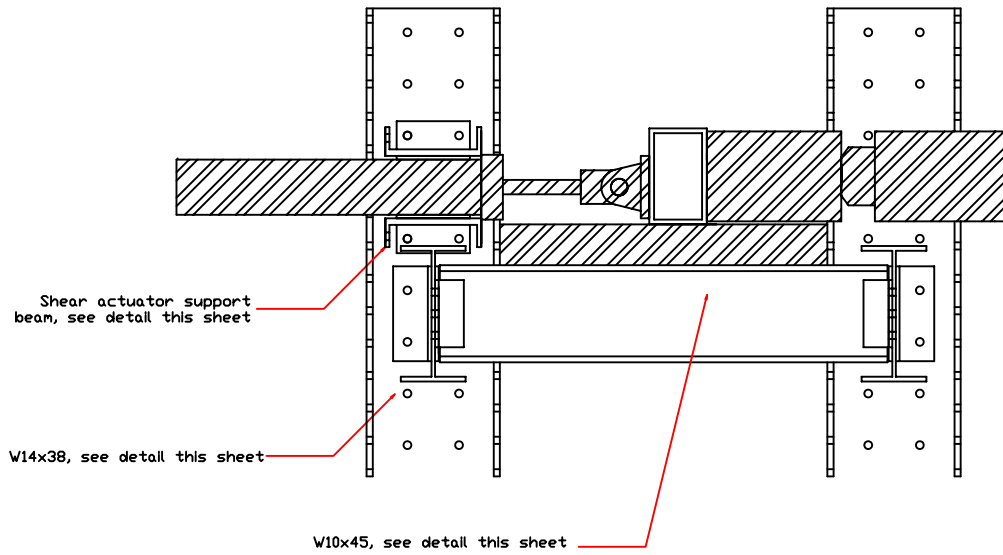
Mounting Plate Detail



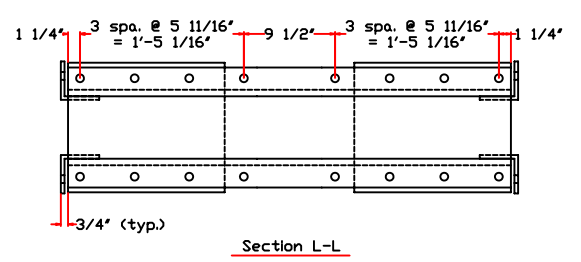
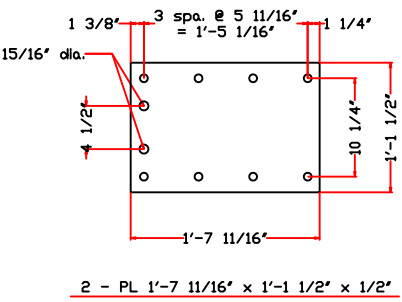
Custom Rotating Beam Assembly



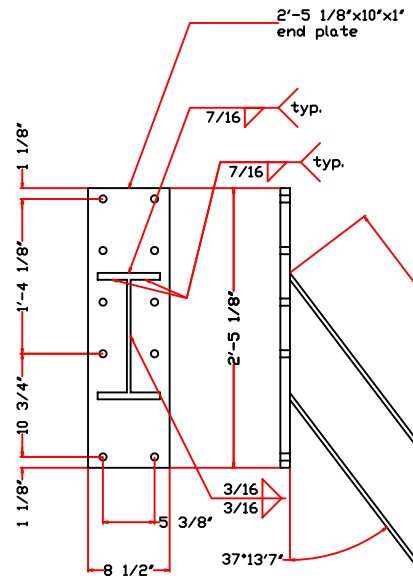
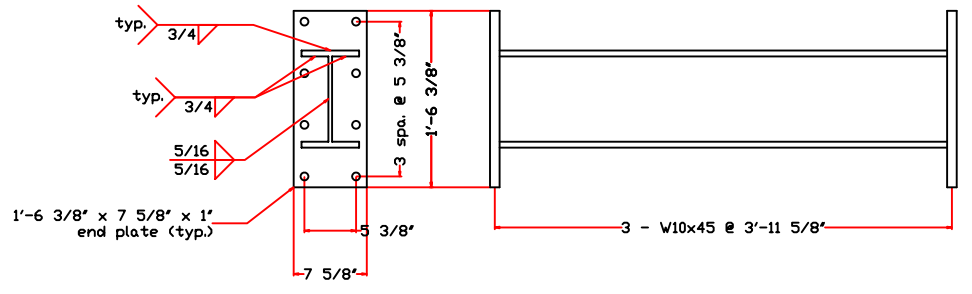
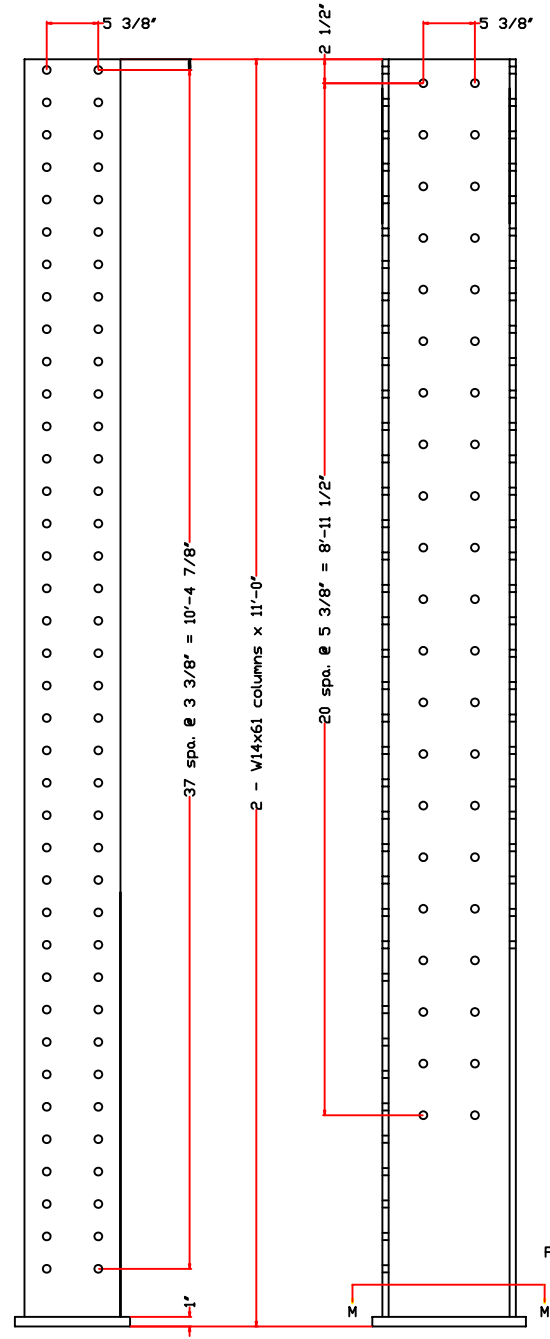




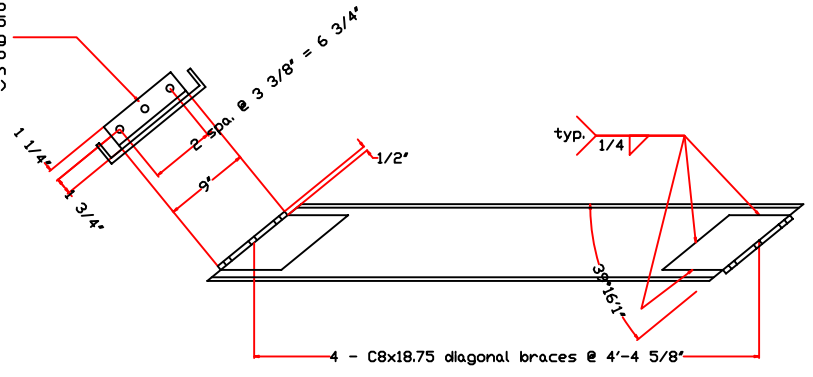
Shear Actuator Support Beam Elevation



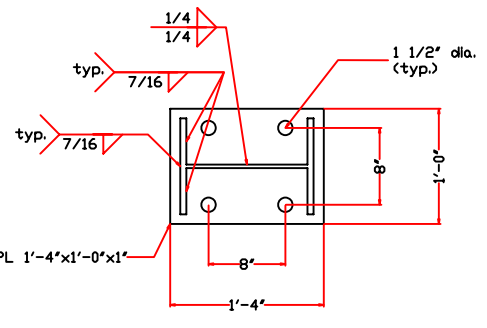
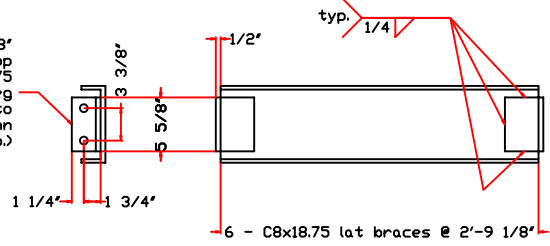
Section L-L



L4x3x1/2 x 9"
 with 4" leg shop
 welded to C8x18.75
 web and 3" leg
 field bolted to
 W14x61 column
 flange (typ.)



L4x3x1/2 x 5 5/8"
 with 4" leg shop
 welded to C8x18.75
 web and 3" leg
 field bolted to
 W14x61 column
 flange (typ.)



Section M-M

