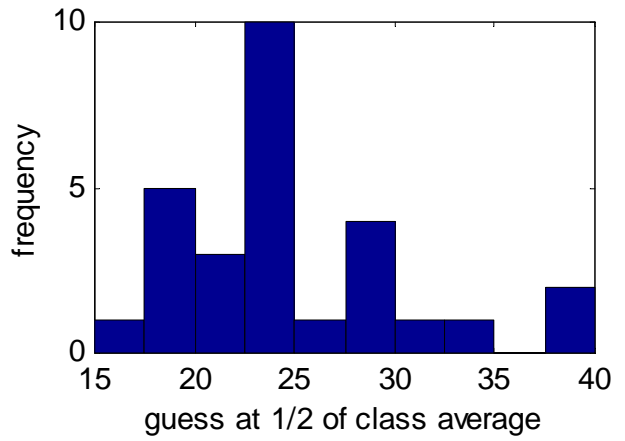
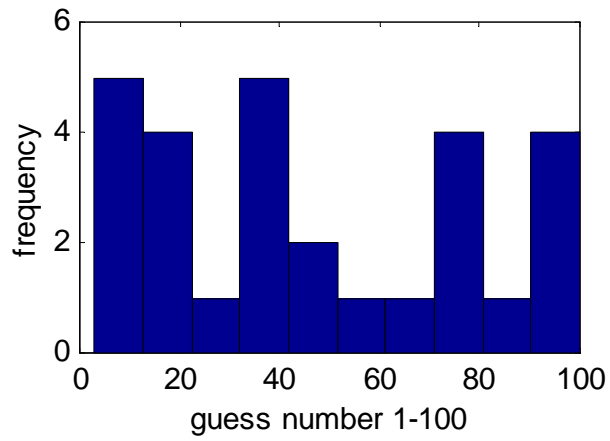
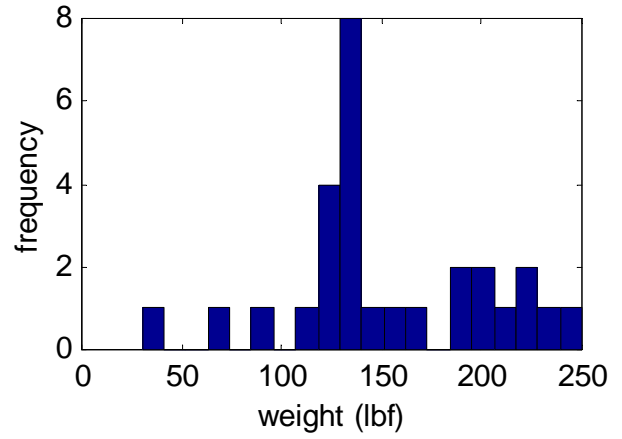
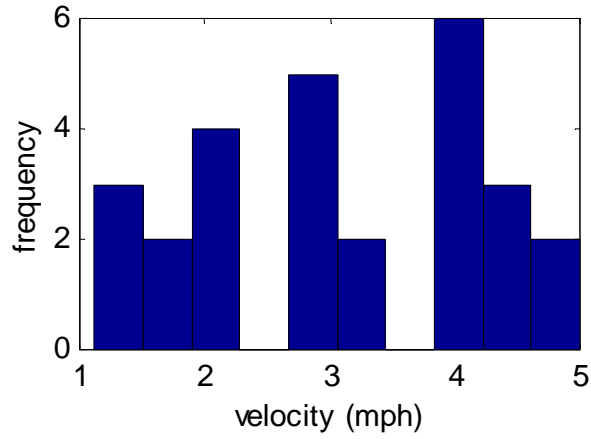
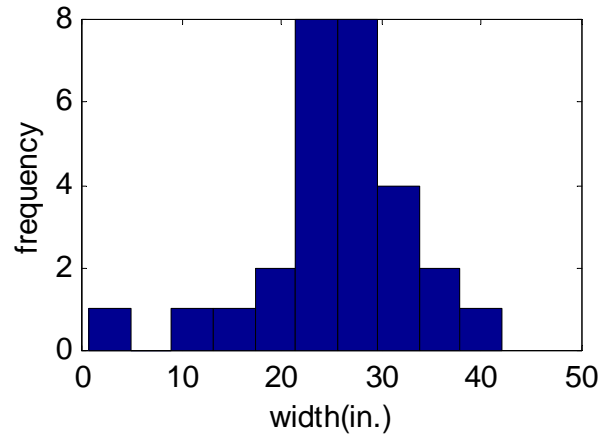
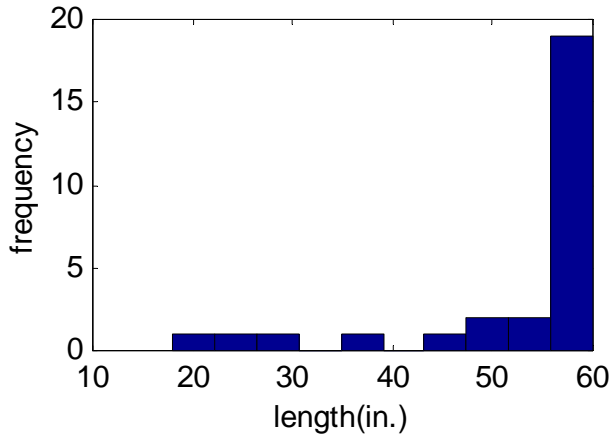


Summary Data from What is Engineering Section 3



length		width		speed		weighth		number	
raw		raw		raw		raw			
1.5 m	59.1 in	0.8 m	31.5 in	5 mph	5 mph	185 lbf	185 lbf	72	30
58 cm	22.8	2 cm	0.79	3 mph	3	250 lbf	250	79	40
5 ft	60	3 ft	36	3 mph	3	145 lbf	145	47	35
5 ft	60	2.5 ft	30	0.7 m/s	1.57	135 lbf	135	19	25
1.5 m	59.1	0.75 m	29.5	1.5 m/s	3.36	190 lbf	190	64	28
5 ft	60	3 ft	36	4 mph	4	200 lbf	200	23	20
5 ft	60	2.5 ft	30	4 mph	4	125 lbf	125	13	25
57 in	57	28 in	28	2 m/s	4.47	135 lbf	135	33	23
4.75 ft	57	25 in	25	4.5 mph	4.5	225 lbf	225	100	25
38 in	38	20 in	20	2.8 mph	2.8	160 lbf	160	33	40
4.5 ft	54	3.5 ft	42	2 mph	2	220 lbf	220	20	25
55 in	55	28.5 in	28.5	1.5 mph	1.5	170 lbf	170	76	25
58.5 in	58.5	26.5 in	26.5	4 mph	4	230 lbf	230	100	25
58.5 in	58.5	27 in	27	4 mph	4	140 lbf	140	100	20
1.25 m	49.2	0.75 m	29.5	1 m/s	2.24	140 lbf	140	33	25
3.75 ft	45	2 ft	24	5 mph	5	200 lbf	200	7	15
1.5 m	59.1	0.55 m	21.7	0.5 m/s	1.12	130 lbf	130	3	20
1.5 m	59.1	0.75 m	29.5	0.5 m/s	1.12	140 lbf	140	36	24
5 ft	60	2 ft	24	3 ft/s	2.05	95 lbf	95	100	21
5 ft	60	2.5 ft	30	2 mph	2	210	210	50	30
5 ft	60	2 ft	24	2 m/s	4.47	120 lbf	120	7	20
4 ft	48	2 ft	24	1.5 m/s	3.36	120 lbf	120	9	22
57 in	57	28 in	28	0.25 quads/min		125 lbf	125	33	22
1.5 m	59.1	0.5 m	19.7	0.75 m/s	1.68	30 kg	66.5	83	27
2.5 ft	30	1 ft	12	3 mph	3	30 lbf	30	22	19
5 ft	60	2 ft	24	4 mph	4	130 lbf	130	7	24
1.5 m	59.1	60 cm	23.6	1.3 m/s	2.91	130 lbf	130	79	30
1.5 ft	18	16 in	16	0.07 mi/m	3.96	115 lbf	115	53	31
responses		responses		responses		responses			
in	6	in	8	mph	15	lbf	26		
ft	14	ft	12	m/s	10	kg	1		
m	7	m	6	ft/s	1	blank	1		
cm	1	cm	2	mi/m	1				
				quads/	1				
mean	52.94	mean	25.74	mean	3.114	mean	152.2	mean	46.46 25.57
stdev	11.73	stdev	7.79	stdev	1.194	stdev	50.69	stdev	32.96 5.903
skew	-2.01	skew	-1.05	skew	-0.15	skew	-0.07	skew	0.385 0.953
kurt	3.163	kurt	3.298	kurt	-1.17	kurt	0.113	kurt	-1.24 1.043