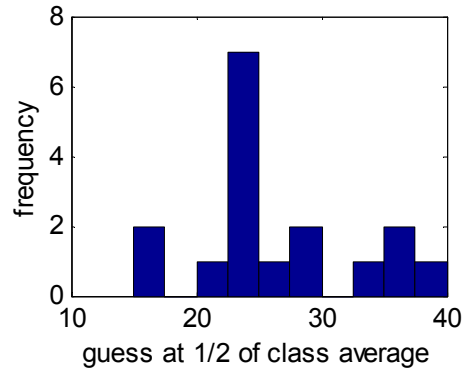
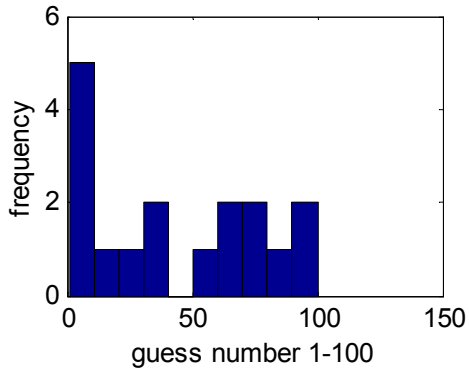
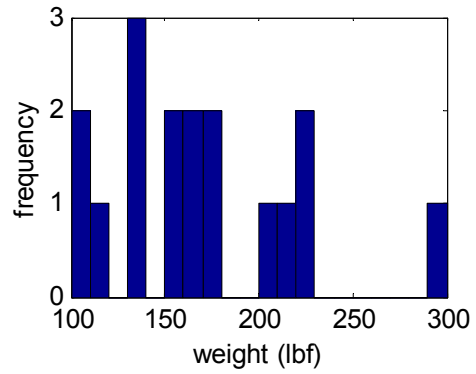
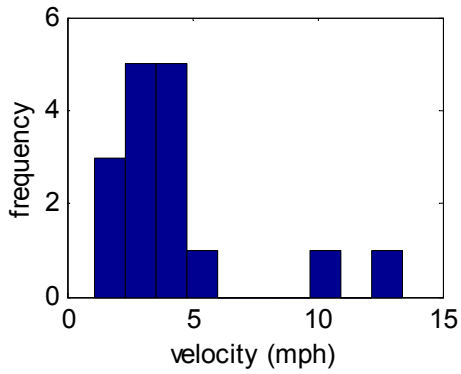
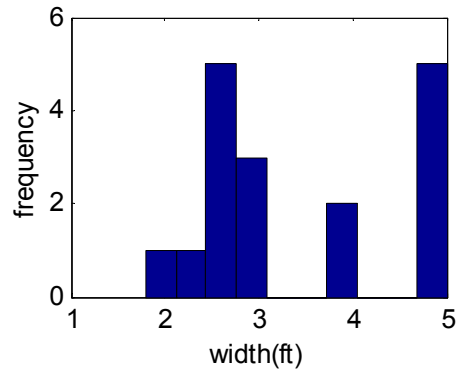
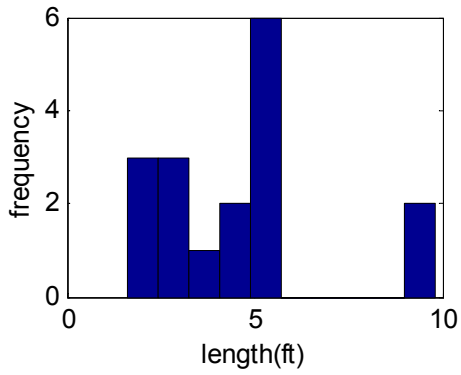


500.101.02 Fall 2002 – Class Data



x_i	$1/2E[x_i]$	length	length (ft)	width	width (ft)	velocity	velocity (mph)	weight	weight (lbf)
7	17.5	5.4 ft	5.4	3.0 ft	3.0	3.0 mph	3.0	300.0 lbf	300.0
37	37	5.0 ft	5.0	2.5 ft	2.5	3.0 mph	3.0	165.0 lbf	165.0
1	25	9.0 ft	9.0	5.0 ft	5.0	3.0 steps/sec	4.4	100.0 lbf	100.0
91	30	50.0 cm	1.6	150.0 cm	4.9	2.0 m/s	4.5	73.0 kg	161.8
85	40	300.0 cm	9.8	150.0 cm	4.9	6.0 m/s	13.4	135.0 lbf	135.0
28	25	4.5 ft	4.5	2.5 ft	2.5	4.0 mph	4.0	100.0 lbf	100.0
7	15	3.0 ft	3.0	5.0 ft	5.0	2.0 m/s	4.5	103.0	228.3
75	24	2.0 ft	2.0	5.0 ft	5.0	NaN	NaN	207.0 lbf	207.0
100	23.1	4.0 ft	4.0	2.5 ft	2.5	1.0 m/s	2.2	228.0 lbf	228.0
11	30	1.0 yard	3.0	36.0 in	3.0	3.0	3.0	140.0 lbf	140.0
38	25	4.5 ft	4.5	3.0 ft	3.0	3.0 ft/sec	4.4	180.0 lbf	180.0
9	35.5	160.0 cm	5.2	55.0 cm	1.8	0.5 m/s	1.1	135.0 lbf	135.0
62	26	2.5 ft	2.5	4.0 ft	4.0	2.0 ft/sec	2.9	155.0 lbf	155.0
2.535354	23	1.7 m	5.6	0.8 m	2.6	5000.0 m/hr	3.1	50.0 kg	110.8
66	21	2.0 ft	2.0	4.0 ft	4.0	10.0 mph	10.0	155.0 lbf	155.0
78	25	5.0 ft	5.0	2.5 ft	2.5	0.8 m/s	1.8	220.0 lbf	220.0
60	35	60.0 in	5.0	28.0 in	2.3	5.0 mph	5.0	180.0 lbf	180.0
average		times ft	11	ft	11	mph	5	lbf	14
44.5609		used cm	3	cm	3	steps/sec	1	kg	2
1/2 ave.		m	1	m	1	m/s	6		
22.28045		yard	1	in	2	ft/sec	2		
44.6	mean	mean	4.5	mean	3.4	mean	4.4	mean	170.6
34.60759	st.dev.	st.dev.	2.257	st.dev.	1.146	st.dev.	3.1118	st.dev.	52.986
0.266172	skew	skew	1.1112	skew	2.332	skew	2.10701	skew	-0.2903
-1.569011	kurtosis	kurtosis	1.1483	kurtosis	-1.56	kurtosis	4.60157	kurtosis	0.6921
comments									
direction on velocity (several people)									
loudest person = most obstreperous									
no units on some answers!									
no answer for one problem									